



AP2 Brake Ducts

293D-AP2-BD2

Installation Instructions

Contents

Item #	Qty	Description
1	1	LH Brake Duct
2	1	RH Brake Duct

Tools Required

Item #	Description
1	Protective Blanket or Towel
2	Silver Marker
3	Dremel with Cutoff Wheel
4	Mini Reciprocating Saw

Personal Protective Equipment

Item #	Description
1	Safety Glasses
2	Protective Gloves



1. Prepare Work Area
 - a. Clear space and lay down protective blanket or towel
2. Remove Front Bumper Cover
 - a. Refer to factory service manual for removal
 - b. Place front bumper cover on protected surface with painted side down
3. Mark Cutting Line
 - a. Draw cutting line with silver marker as shown in Fig. 3a
 - b. The inner cutting line should be ~20mm from line shown in fig. 3a.
 - c. Note cutting too much will not allow the fastening tabs to secure the part too the bumper.

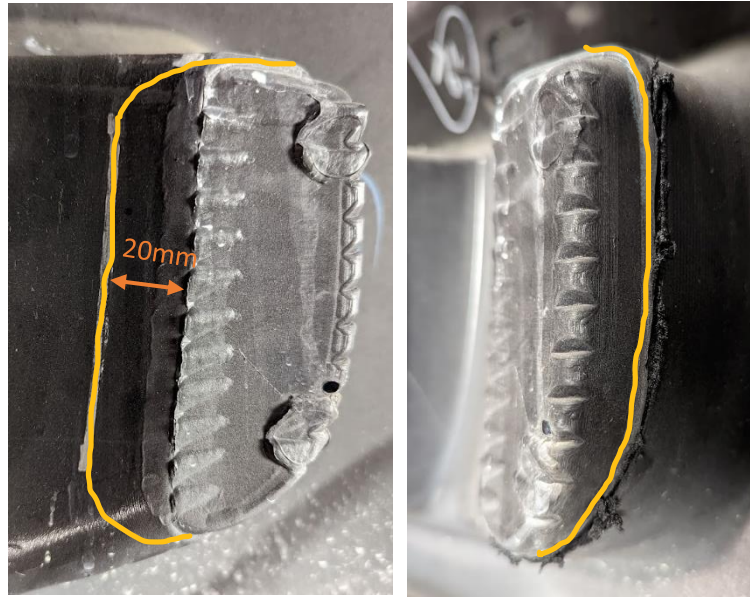


Figure 3a

4. Cut Faux Vent

Warning: Do not allow cutting tool to hit painted surface

 - a. Initiate cut line with Dremel tool as shown in Fig. 4a
 - b. A mini reciprocating saw can be used to cut radius.



Figure 4a

- c. Test fit part to see if more bumper needs to be trimmed away. Fig. 4b
- d. Trim small slivers at a time until all 3 tabs can securely hold the part to the bumper. It should fit tightly



Figure 4b

- e. Once trimming is complete remove plastic burs with a file fig. 4c



Figure 4c

5. Install Nozzle

- a. Press in nozzle and assure all 3 tabs are engaged fig. 5a



Figure 5a



AP2 Brake Ducts

293D-AP2-BD2

6. Repeat steps 1-5 for the opposite side

7. Get some! 🍊🍌

